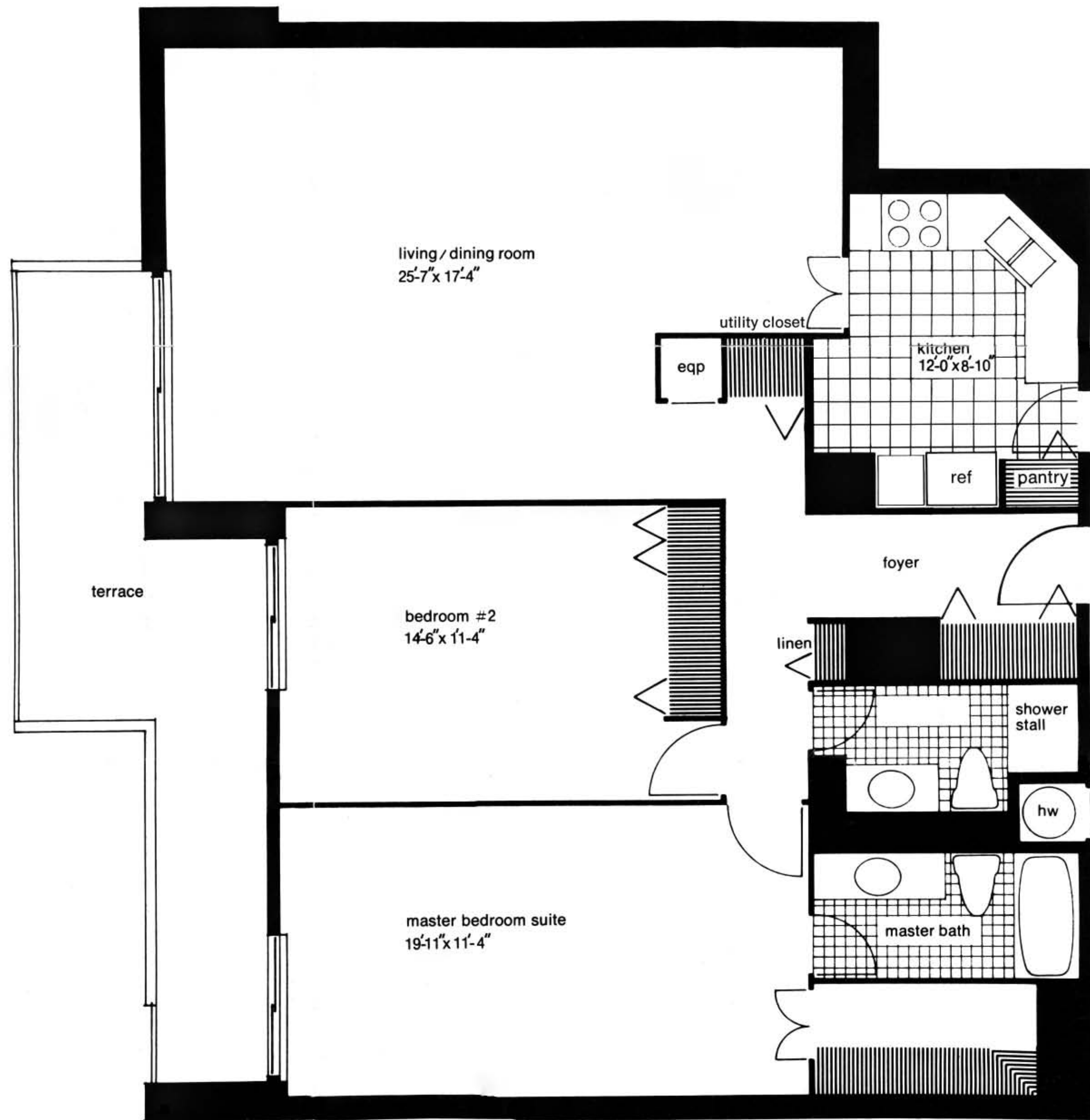
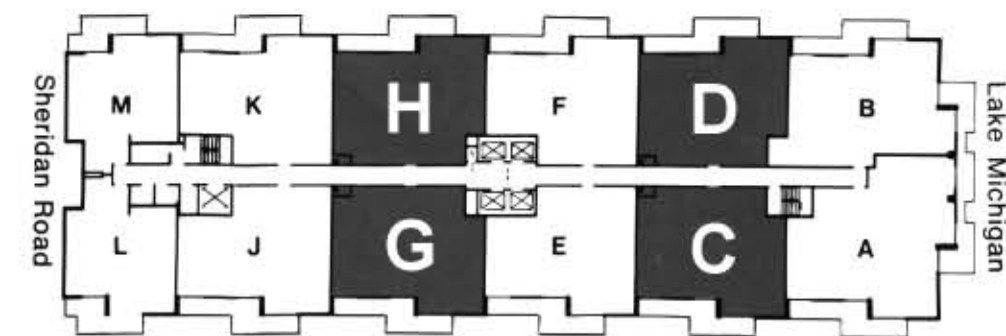


The Corinth

C, D, G & H Two bedroom apartment/homes 1519 square feet

An over-sized living room—dining room sets the pattern of spaciousness and comfortable living to be found throughout the Corinth. At one end of the twenty foot master bedroom, there's a walk-in closet and private bath. At the other end, there's a floor-to-ceiling window wall which slides aside to let you step out onto your own private terrace. A second bath with shower is conveniently located for guests. The Corinth is a beautiful lake-front condominium which offers pride of ownership and lasting value to its owner.

These are 1969 pre-construction promotional floor-plans and may not be 100% accurate. Units D and H face north. Units C and G face south and are mirror images of this plan.



Dimensions are approximate. Plans subject to revisions deemed advisable by builder or architect or required by law. Where materials, brand names or model descriptions are used, the developer reserves the right to provide equipment which supplies equal or superior performance as deemed necessary because of production scheduling, shortages, changes in manufacturers' lines or other reasons.